

# WP News



Westminster Park Residents' Association  
Bringing our community alive



@wesparkra

## Fir Tree Avenue anger at Pumping station proposals

**Without any consultation, Dee Valley Water have given notice that they are planning to build a pumping station on the grassy area opposite houses at the top of Fir Tree Avenue.**

This is apparently to meet OfWat requirements for resilience in the water supply and is nothing to do with the proposed Wrexham Road housing development.

The original design was the size of a double garage with an adjacent area for parking of maintenance vehicles. This proposal would have involved felling several of the twenty mature trees which provide a screen between the Fir Tree

Avenue houses and the busy Wrexham Road.

Residents and WPRA have contacted Dee Valley Water objecting to the plans. Dee Valley have said that they will be submitting a planning application, which will enable the proposal to be properly scrutinised but, in the meantime, asked for a meeting with us.

At the meeting they submitted new designs for a much smaller building, agreed that the hard standing for the parking of maintenance vehicles was not essential and said that only two trees would need to be cut down.

We have asked for alternative sites to be considered and made it clear that the planning application to construct the pumping station in Fir Tree Avenue would be strongly opposed. Dee Valley agreed to consider our points with a further meeting to be arranged in June.

## LATE NEWS: Wrexham Road development plans submitted

Two planning applications have just been submitted to Cheshire West and Chester Council by Redrow Homes: one for full planning permission to build 509 dwellings and associated infrastructure including a local centre and primary school, and a second for the construction of a great crested newt mitigation area.

It is expected that two further applications will shortly be submitted by Taylor Wimpey and Redrow - the first an outline application to develop the full 1400 dwellings intended for the site including infrastructure, and the second seeking full planning permission to build 816 dwellings.

The application documents will be available to view on the Council's web-site.

Brian Westcott

Local news continued on page 3.

COME AND JOIN IN THE FUN AT  
WESTMINSTER PARK COMMUNITY CENTRE'S  
**SUMMER FAYRE**  
ON  
**SAT 8TH JULY 2017**  
1.30-5PM  
Bringing The Community Together  
Children's Entertainer DISCO  
Crafts Fun Games  
ICE CREAM  
TEA & CAKES  
STALLS  
EVERYONE WELCOME

### Dates for your diary

|             |  |
|-------------|--|
| Thu 15 Jun  | Evergreen - Lache Park Estate talk, WP Community Centre          |
| Sat 24 Jun  | Chester Riverside Rotary Quiz, WP Community Centre               |
| Tue 27 Jun  | Evergreen Mill Hotel Dinner Cruise                               |
| Sat 1 Jul   | Councillors' Surgery, WP shops                                   |
| Sat 8 Jul   | Westminster Park Summer Fayre, WP Community Centre               |
| Thu 20 Jul  | Evergreen Afternoon Tea & Quiz, WP Community Centre              |
| Sat 5 Aug   | Councillors' Surgery, WP shops                                   |
| Wed 9 Aug   | Garden Club visit to Norton Priory gardens                       |
| Thu 17 Aug  | Evergreen talk - Life as Chester's MP (tbc), WP Community Centre |
| Thu 28 Sept | Garden Club visit to Wollerton Old Hall gardens                  |

## News from your Councillors

### King's School parking

The long -standing issue of King's School Sixth formers parking in Fir Tree Avenue and surrounding roads seems to be close to being resolved. There has been ongoing dialogue involving ourselves, the Council and the School in recent months.

Following a meeting recently with the Head and the Bursar attend by myself (Neil) and Brian Westcott, the School is now planning to introduce a shuttle bus to ferry pupils from the Park and Ride to the school. It is expected that this will commence when school returns in September. There are a few details to tidy up over the summer and the School will accommodate the sixth formers on campus for the rest of the summer term.

We want to acknowledge the efforts of the school, which will incur extra expense by providing this solution, and our Council Officers who have had to work hard to put these arrangements in place.

### Westminster Park

The recent traveller encampment on the park was resolved very quickly thanks to the efforts of our Police and the Council Gypsy and Traveller liaison officers. We need urgently to try to find a way to prevent a recurrence and we are looking at options to do this.

On a more positive note we have been able to fund from our Members budgets new covers and sight screens for the excellent cricket club which plays in the park.

In addition, it has been drawn to our attention that the changing rooms are in a very poor condition. We have used some of our remaining budget and funds from other Council budgets to repair the roof and give the changing rooms a much needed spruce up.

We hold a monthly street surgery on the first Saturday every month at Westminster Park shops, but in the meantime, please do not hesitate to contact either of us if you need help with an issue.

**Neil Sullivan**  
**Razia Daniels**



### Councillor Razia Daniels is new Lord Mayor of Chester

The new Lord Mayor of Chester will champion community spirit during her year in office as well as raise money for her chosen charities.

Councillor Razia Daniels took up the Lord Mayor of Chester's chain of office in a ceremony at Chester Town Hall on Thursday 18 May 2017.

Speaking after her inauguration Councillor Daniels said: "I am truly delighted to be chosen as Lord Mayor. This is such an honour and privilege for me.

"Chester residents are proud of where they live, and as their Lord Mayor, my aim is to promote the city, its people and everything it has to offer."

Cllr Daniels chosen charities for the next 12 months reflect her passion for equality and diversity and include – DIAL West Cheshire, The UNITY Centre (CHAWREC) and St Mary's Handbridge Centre.

### Evergreen

Our Evergreen Over-60s club enjoyed some interesting talks in the first quarter of 2017: 'Crossing Places' with Ken Waldie, a talk by two Chester Magistrates and Susan Chambers told us of life in Chester during WW1. We also had a 'beer and skittles' outing to the Bickerton Poacher which was great fun.



**Twenty-six Evergreen members and their guests enjoying a game of skittles at the Bickerton Poacher.**

Our next meetings are on 15 June, when Linda Shuttleworth of the Lache and Westminster Park Local History Group will give us a talk on Lache Park Estate, and 20 July we have a special afternoon tea with a quiz. For 17 August we had booked our MP, at the time Chris Matheson, to talk to us about life as Chester's MP. Since then the General Election has been called, but we hope to have whoever is our MP then to come and talk to us. However at the moment this has yet to be confirmed.

On 27 June we will enjoy the very popular Mill Hotel Dinner Cruise. The trip to

Chatsworth on 11 July is now fully booked. Evergreen's Supper Club has enjoyed excellent meals recently at Miller & Carter and The Yard and there are plans to visit the Opera Grill, The Botanist and the Shanghai.

Membership numbers are healthy, and we have good attendance at our meetings. Any Westminster Park resident over 60 years of age is welcome to join. Membership for Evergreen remains at £10 a head for the year and meetings are held in the Community Centre between 2 - 3.30pm each third Thursday of the month when complimentary tea, coffee and biscuits are served.

We look forward to seeing you there.



**Visit to Storyhouse in April**

### Bebbington & Williams

#### YOUR LOCAL FISHMONGER

**The finest fish & seafood caught daily & prepared just the way you like it.**

**All fish can be served in an oven/ microwave ready bag with full cooking instructions.**

**We prepare an ever growing range of ready meals, fishcakes and pies.**

**NEW - A great range of fish ready for the barbecue**

**Contact us: 53 Five Ashes Road  
01244 678900**

**dave@chesterfreshfish.com  
chesterfreshfish.com**

Welcome to the June Edition of the WPRA Newsletter. As ever, there is much to report since our last edition. We had our AGM on 12 April 2017 and I am grateful to all the Committee Members who serve on the Committee on behalf of our Community.

We had a very successful 'Curry & Quiz' evening on 22 April 2017 which was a sell out and we will be planning our next quiz evening later in the autumn. Do come and join us!

Brian Westcott has given a detailed update in this edition on the planning issues in the area together with the proposed building of a Water Pumping Station in Fir Tree Avenue.

We are hoping that following his recent meetings with the King's School, together with Cllr. Neil Sullivan, the parking problems of the residents near to the school will be resolved. I know this has caused much distress to residents in the area and I am grateful that we appear to have a

resolution.

Our long-standing PCSO Chris Fox is stepping down from his role in June 2017 and I wish to thank him for his service to our Community and wish him well in his new role. Chris has always worked closely with the residents and been an integral part of Westminster Park. We look forward to welcoming the new PCSO.

Cllr. Razia Daniels takes up her new role this year as Lord Mayor and we wish her a successful year. I am sure that we will continue to see her at our events throughout the year.

Look out for the Summer Fayre on Saturday 8 July - I hope you will be able to attend. The Garden Club always provides a fabulous plant stall.

Enjoy the Summer and keep in touch with any issues that you feel we need to address.

Pauline Brown, Chair

## WPRA Membership

### Subscriptions

If you have not already done so, please pay your subscription now for 2017. The payment of £2.00 is used to support local community events, produce this quarterly newsletter and improve the appearance of our estate.

You can pay in the following ways:

- Online Banking to account 32470878, sort code 60-40-08 quoting your name and house number as ref (e.g. Magilton31).
- By handing the form and subscription in at the **al dente** deli or directly to Sandra Magilton, Treasurer, at 31 Rowcliffe Avenue, CH4 7PN

Please make cheques payable to 'Westminster Park Residents' Association'.

As in previous years you can pay the subscription for both WPRA and the Friends

of Westminster Park (FOWP) by means of the same form. Their annual subscription is also £2 per household (if paying both by cheque, one will suffice made payable to WPRA).

You can advise us by email that you have paid. Send a message to: sandymagilton@googlemail.com

Sandra Magilton

## WPRA Email Updates

Periodically we send out email updates with items of local interest such as the Wrexham Road development. We try not to make these too frequent.

You can log on to our email management website to check or amend your details here: <http://emailupdates.wp-ra.org.uk>

If you do not wish to receive email updates, you can opt out of the system.

*All of our trips will be self drive. If you need a lift please contact Mary Pole.*

### Front Garden Competition

Each year the WPRA awards a small prize for the best looking front gardens. This year our theme will be summer colour.



Wollerton Old Hall gardens

## Work starts on Sherbourne Ave

Milne Housing have now installed new fencing at the top of Sherbourne Avenue in preparation for the construction 31 houses.

## Boundary proposals

The Boundary Commission are looking at ward boundaries with a view to reducing the numbers of councillors. At present Westminster Park is in the Handbridge Park ward, but the fields on which Paycause propose to build are in the Huntington and Dodleston ward.

Since the new development will abut WP, and many of the services and issues will be common, we believe that both areas should be represented by the same councillors. We have made a submission to the Boundary Commission to this effect.

## King's School parking issues

On-going parking problems caused by King's School sixth formers may be close to a resolution.

It was feared that the recent application submitted to build a new sports centre would result in yet more parking problems for WP residents as the plan included a reduction of nine parking spaces at the school.

A previous application granted to build a nursery school led to parking by sixth formers on Fir Tree Avenue, Manor Road and surrounding roads in WP. This has caused great inconvenience to residents.

We objected to the new application on the grounds that it could make the parking situation even worse and urged the Council not to approve the application until a solution was found.

Subsequently, Cllr. Neil Sullivan and I were invited to a meeting with the Head and Bursar. King's recognise the problem caused by students and agreed to an offer by the Council to allow them to use the Park and Ride. Students can then walk, use the bus, or the school may collect them. They will make it clear that it is against school rules to park in WP.

They have also created new spaces for minivans so that the application will not result in a net reduction in car parking.

Please contact me for further information on any of these issues. **Brian Westcott**

## WPRA Gardening Club

### Programme Dates for 2017

**Saturday 8 July - Westminster Park Summer Fayre**

All donations of plants for our regular stall at the Westminster Park Community Fayre will be very gratefully received.

**Wednesday 9 August** – a conducted tour of the **Walled Gardens at Norton Priory**.

**Thursday 28 September** – an introductory talk by one of the gardeners followed by a visit to the gardens at **Wollerton Old Hall**.

**Wednesday 11 October** – 8pm A talk at the Community Centre by David Toyne on "Organic vs Inorganic Gardening"



Driving lessons in Chester, Wrexham and surrounding areas

[www.timburwelldrivingschool.co.uk](http://www.timburwelldrivingschool.co.uk)

**Mobile 07712764009**

ring or text for further details

## Shop News

### Co-op Gives over £5000 to Local Charities

**A staggering £5030 has been raised for local charities in just six months by members of the Westminster Park Co-op.**

Belgrave Pre-school, the West Cheshire Foodbank and SPACE (Sensory play areas for Chester & Ellesmere Port) have all benefitted from the generosity of the Co-op's scheme. As a member, every time that you shop at the Co-op and swipe your card, 1% of what you have spent on own brand products and services is donated to the Co-op Local Community Fund. This money, along with money raised from carrier bag sales, is used to support local projects that benefit the community close to where we live.

One of the delighted recipients of the Community Fund is Belgrave Pre-school which is run in the Westminster Park



Community Centre. They were thrilled to receive a cheque for £1619 from the Co-op and made a special visit with the children to say thank you.

The Pre-school plan to spend the money on improving their outdoor play area. Ashley Middleton, who runs the Pre-school, said,

"This money will make a huge difference to what we are able to provide for the children."

Joanne Gospel-Thomas, manager of the Westminster Park Co-op said, "It is amazing how much money can be raised through the Local Community Fund. Just by swiping their cards on every visit, our members have enabled us to give over £5000 to local charities.

"We were so happy to be able to give so much to Belgrave Pre-School. It was great to see the children when they came over to say thank you and they brought us a huge thank you card that they had made."

If you are a member, you can choose which of the nominated charities you wish your 1% to go to. Log in to your account at [www.co-op.co.uk/membership](http://www.co-op.co.uk/membership).

## Westminster Park Community Association, Community Centre

The Community Association is a registered charity and runs the Community Centre adjoining Belgrave School on Five Ashes Road. Annual Membership of £10 is now being taken for existing and new members and includes entrance to the well stocked, reasonably priced members' bar.

The bar is open every evening, Monday to Sunday, 7.30 – 11.00 pm, Saturday lunchtime, 12.00 – 2.00 pm and Sunday lunchtime, 12.00 – 3.00 pm. New members are always welcome.

Our function hall is a good size and is available for hire at £12 per hour for private/club functions; it is free of charge for charity events. The hire of the hall is open to all.

The Community Association also hosts its own events with fun quiz nights on the last

Saturday of the month and evening bingo sessions on the 3<sup>rd</sup> Friday of the month. These are open to all, so come along and lend your support; new faces are always welcome.

Information on joining or hiring the Community Centre can be obtained by calling 01244 671243 after 7.30 pm or by e-mailing: [wpca2008@yahoo.co.uk](mailto:wpca2008@yahoo.co.uk).

**Sandra Magilton**

### Summer Fayre

The Summer Fayre will be held on Saturday 8 July and if you require a stall in the craft area or a pitch on the field please contact me on 01244 629167.

**Colin Dollimore**

## Westminster Park Golf Course and Café

At Westminster Park we continue to work hard on the course and have currently built five new tees. In addition, we have invested in more new machinery to help improve the greens.

Our very popular junior lessons have started again between 6.00-7.00 pm on a Thursday - just roll up.

The cafe continues to go from strength to strength with more groups using it as a meeting place and far more regular users. We continue to add to the menu – pop in to see what's on offer.

We hope to see you soon.

**Paul, Nick and the team**



## Westminster Park Café apology

Apologies for an error in the last issue. The timings of club meetings should have read:

|         |                             |
|---------|-----------------------------|
| Tues am | - Walking for Health        |
| Tues pm | - Parent & Tots group       |
| Weds pm | - Nordic Walking            |
|         | - Ukulele club (alt. weeks) |
| Fri pm  | - Scrabble club             |

### Can you light the touch paper that helps a child blast off into a world of fun and learning?



**PASSION FOR LEARNING** is looking for volunteers throughout West Cheshire with between an hour and a half to four hours a week to spare, who would like to help support young children in their local school with their reading and learning.

We are looking for **enthusiastic adults** who genuinely enjoy the company of children and can bring new experiences and their own passion for life and learning to the next generation.

- ✓ Our one to one sessions are based on fun and engagement;
- ✓ Our volunteers are uniquely **trained, nurtured and resourced**.
- ✓ You will have your own little group to allow you to develop a **consistent relationship** with the children and provide them with tailored support.
- ✓ It is an incredibly fulfilling opportunity which helps the children to flourish.
- ✓ **Prior experience is not necessary.**

If you would like to know more then we would love to hear from you.

Please call Diane on 07966 404355 or email [diane.clark@passion-for-learning.com](mailto:diane.clark@passion-for-learning.com)

## Friends of Westminster Park

Thanks to two bulb-planting working parties last autumn, daffodils contributed by our local councillors provided a delightful splash of spring colour in the grassed area at the end of the car park, along the vehicle entrance to the café block, and around the civic sculpture next to the children's play area. Previous bulb plantings and the wide variety of trees coming into leaf have also added to the attractiveness of the park as summer approaches.

After raising funds last year for more public seating, it is pleasing to report that three new park benches have been installed at intervals along the perimeter path so that more people, particularly those with mobility limitations and young children, can pause and enjoy the scenery and sports activities. One of the seats was kindly donated by a local resident and we have received additional offers of donations. Further donations would be greatly welcomed and the Friends of Westminster Park will be pleased to make the necessary arrangements.

In response to strong interest by several sports and exercise groups, the Friends and Golfstorehouse have been active in advocating the restoration of the changing rooms in the café block and a Council renovation project is now under way. When

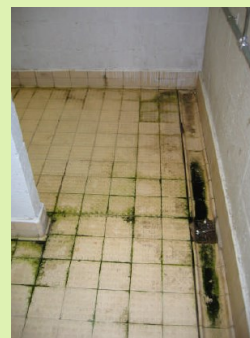


the project is complete, effective arrangements for bookings and day to day management will be needed to ensure that the facilities are properly supervised and kept in good condition. We are looking to work with the Council and park users to achieve this.

For the second time in nine months there was another unauthorised encampment by travellers in April. This was dealt with promptly and efficiently by the Council and Police and, because of the particular circumstances on this occasion, it was possible to achieve eviction within a day without the need to obtain court orders. Coming so soon after the previous incident last July has reinforced questions about the case for preventative measures and further discussions are being sought with the Council.

Although fortunately not a serious problem, there has also been a disappointing increase

The state of the changing rooms before renovation.



in vandalism, litter and anti-social behaviour in recent months. If anyone witnesses or becomes aware of such incidents please report them to our new local PSCO by calling 101. And please help to keep the park clean and tidy for everyone's enjoyment by depositing litter and dog waste in the bins provided.

Summer's here so make the most of the park!  
**David Guyton**



Changing room visit by our Councillors

## Glan Aber Tennis Club

Our annual Open Day in May provided free tennis activities for adults and juniors. The weather was cool but attendance was good and everyone enjoyed themselves.

We have been actively supporting tennis in the community and our coaches are currently providing free weekly coaching sessions at St. Clare's, Lache and Belgrave Primary Schools. Our Open Day raised funds for the Outreach programme so that we can continue with this initiative.

The summer season is well under way and we are pleased to have adult teams in the Chester League and adult and junior teams participating in Aegon team tennis. There is plenty of social tennis with adults playing on Tuesday and Thursday evenings,

as well as drop in sessions with a coach on Monday and Thursday mornings.

Pay & Play sessions run every Saturday and are open to non-members, providing coaching in a fun environment:

|               |             |
|---------------|-------------|
| 3-5 year olds | 09.30-10.00 |
| 6-10 years    | 10.00-11.00 |
| Adults        | 11.00-12.00 |
| 11-16 years   | 12.00-13.00 |

Just turn up and join in.

The coaching programme is well supported. Summer camps will run weekly in the school holidays. For further coaching information, contact Head Coach Jo Trataris on 07875 108690.

Visit our website at [www.glanaber.com](http://www.glanaber.com) for any further information including membership details.

## Yoga Classes

**Dru Yoga is a Gentle but Powerful Yoga that Improves your Health, Vitality and restores Your inner Calm**

**Oddfellows Hall Saltney CH4 8SG**

**\*Monday 1.30-3pm**

**Tuesday 6.30 – 8pm**

**Wednesday 10-11.30am**

**For more details contact Teresa  
07876254518**

**or [teresa@teresa4yoga.co.uk](mailto:teresa@teresa4yoga.co.uk)**

**\*Meditation class Monday 12 - 1pm  
followed by cup of tea**



- Superb nine-hole course. Perfect for the complete beginner or advanced golfer to practice their short game
- Hot & cold food available in the cafe
- Children's golf & football parties available
- Fun way to start playing golf
- Team building corporate days
- PGA pro individual/group lessons
- Junior roll-up lessons Thursdays 6-7pm
- A warm friendly atmosphere
- Course improvements made. Including tree work, new signage and tees



Hough Green,  
Chester  
CH4 8JQ  
Tel: 01244 680231

## Cheshire Police

Hello Everyone

I am Christopher Fox and have been the Police Community Support Officer in Westminster Park for a number of years now.

The bike marking sessions on 30 April were a great success with 23 bikes being marked and registered on a property database. There will be further bike marking sessions in the future.

After over eight years I will be leaving my role as Police Community Support Officer for Handbridge Park to take up a new role within the Constabulary in the near future. I would like to take the opportunity to thank the numerous people who live in the area who have helped me keep Handbridge Park a safe and pleasant place to live. I firmly believe that Handbridge Park is one of the best and safest locations to live and have greatly enjoyed my time working in the area.

I would also like to take the opportunity to

encourage residents to sign up to Cheshire Police Alerts. This is an opportunity for residents to keep updated via e mail about the household crime and things of note in their local area. I regularly send out Alerts and believe they are a great tool to communicate with residents. To sign up type in Cheshire Police Alert into Google and fill in the registration form.

Please remember if you have any issues that you wish to discuss, the Police and your local Councillors hold the following Surgeries on the first Saturday of every month:

Westminster Park Shops 10.30-11.45  
Handbridge (Dee Bridge - opposite the Ship Inn) 12.00-13.00

**Chris Fox**  
**PCSO for Handbridge Park**

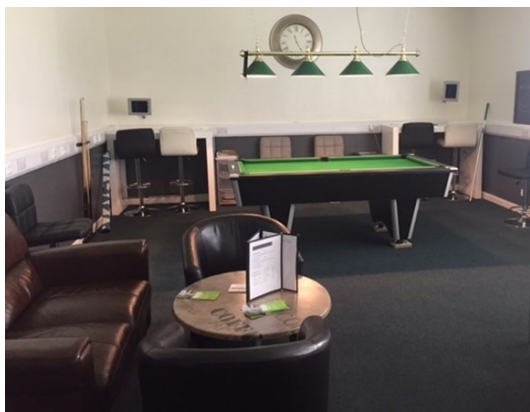
Our new PCSO is Lauren Davies who can be contacted at:  
lauren.davies@cheshire.pnn.police.uk



## Free pool, darts and company at The Den in Lache

Don't sit at home bored or lonely ... get yourself down to The Den in Lache!  
Open Mon-Weds 9am-4pm and Thurs, Fri 9am-2pm

Come along and see it with your own eyes – what was the Lache Community Centre, Hawthorn Road in Lache has been re-launched as 'The Venue' and (we promise) is unrecognisable!



At The Den you can:

- Enjoy a game of pool, darts or any of our brand new board games
- Watch ANYTHING on our TV (we have most channels)
- Use an i-pad with our free equipment and wifi (you could Skype long lost family in Australia in between a game of pool and a cuppa!)
- Play darts, dominoes or any of the other games we have available.
- If colouring is your thing you can do that too!
- Or just have a chat – we're a friendly bunch and everyone is made very welcome.

The Den is open every week day (to anyone over age 40) and is free of charge.

At The Venue there is also a gym which is only £2.00 per session after a free induction, a café serving drinks, snacks and lunches, function room, meetings rooms, which can be hired and if you need catering we can do



that too.

There is free parking and wifi.  
For more details, call Dennis on 01244 972546, email:  
dennis.smale@cheshirewestandchester.gov.uk – or just drop in when you're passing and have a look around.

## Curzon Garden Services

Lawn and hedge cutting  
All aspects of tree work undertaken  
Hard and soft landscaping  
Garden maintenance  
OAP discounts

Tel Phill 07932 250692 or 07710 788799



CHESTER HEARING  
& BALANCE SERVICES

## Local Independent Hearing Service

- Adult hearing assessments
- Paediatric hearing assessments
- Private digital hearing aids for adults and children

- Ear wax removal
- Tinnitus management
- Hearing protection

Chester Wellness Centre · Wrexham Road · Chester · CH4 9DE

www.facebook.com/chesthearingandbalance

info@chesthearingandbalance.co.uk · www.chesthearingandbalance.co.uk



**CONTACT US TO MAKE AN APPOINTMENT ON 01244 680214**

### The Oddfellows

We have all felt lonely at some point in our life. For some it is a temporary feeling that we overcome, but for others it lingers and can seriously dent your confidence, as well as leave you feeling cut-off.

Have you ever thought of joining the Oddfellows? (Nothing to do with the pub chain!) We have more than 350,000 members nationwide. Our local venue is at The Oddfellows Hall, 65 High Street, Saltney CH4 8SG. We are a friendly society which was formed over 200 years ago.

We hold a coffee morning every Thursday (50p for coffee, biscuits and a friendly chat);

a scrabble club every other Tuesday at the hall and we run many regular inexpensive events throughout the year.

If you would like to come along to find out what we have coming up, just give our secretary Denise Turner a call on 01244 675757 or e-mail

[denise.turner@oddfellows.co.uk](mailto:denise.turner@oddfellows.co.uk). The office is closed on Wednesdays.

Or if you would like to speak to someone more local you are welcome to call me, Olwen Bellis on 678719 or e-mail

[olwen.bellis@tiscali.co.uk](mailto:olwen.bellis@tiscali.co.uk) as I have been a member for more than 14 years.

**Olwen Bellis**

### RNLI Needs Volunteers

The Chester Branch of the RNLI are in need of volunteer Collectors to help them raise funds. They are looking for anyone who can hold a bucket for an hour or two for a maximum of four times a year.

The RNLI is run entirely by donations and is staffed by volunteers. If you feel that you have time that you could spare, ring 07768 928942 or contact us by email: [chester.rnli@btinternet.com](mailto:chester.rnli@btinternet.com).



Without collectors to raise funds, their volunteer crews and lifeguards will not be able to continue their lifesaving work.

### Tuition

#### SATS/ Entrance exams 2018?

**NOW** is the time to start preparing – don't leave it until September!

English/ Maths/ Verbal Reasoning

Tuition for KS2 tests, or general help with literacy or numeracy (5-11 years) by experienced tutor.

Reasonable rates  
Ring 01244 675431

### Access to Community notice boards

There are a number of noticeboards in the area on which you can display notifications of events, etc. Below are the details of the persons you need to contact:

#### Community Notice board, Castlecroft Road

Martin Amesbury, 679271  
Brian Westcott, 675431

#### Notice board, SJ Bebbington

Sandra Magilton, 677373  
Jennifer Crew 680364

#### Noticeboard, Entrances to Westminster Park, Lache Lane and Hough Green

Sue Britton 677936

### Next Issue

WP News is a quarterly publication and the copy date for the next issue is Friday 11 August. Please send editorial and letters to the Editor at [newsletter@wp-ra.org.uk](mailto:newsletter@wp-ra.org.uk). For advertising queries, please ring 07752 854383.

WP News is published by the Westminster Park Residents' Association (WPRA) with the understanding that from the information presented therein, there can be no responsibility as to the accuracy or legality of the content on the part of the WPRA. Views expressed are not necessarily those of the Editor or Committee of the WPRA.

### The information section

#### Westminster Park Residents' Association Committee

**Chairman:** Pauline Brown 679823

**Secretary:** Penny White [pennywhite@sky.com](mailto:pennywhite@sky.com)

**Treasurer:** Sandra Magilton, 31 Rowcliffe Ave. 677373

**Editor:** Jennifer Crew [newsletter@wp-ra.org.uk](mailto:newsletter@wp-ra.org.uk)

**Website Co-ordinator:** Dave Craggs 682407

**Email:** [webmaster@wp-ra.org.uk](mailto:webmaster@wp-ra.org.uk)

**Welcome pack co-ordinator:** Pauline Brown 679823

#### Other Committee members

Olwen Bellis 678719

Sue Britton 677936

Susan Eva 676697

Rosemary Mason

Richard Short 678559

Brian Westcott 675431

#### Clubs & organisations based in Westminster Park

*Please let the Editor know if any details are incorrect or if you have a club or organisation that you would like listed.*

**Belgrave Badminton Club:** Khal 07786 080089

**Belgrave Pre-School:** Ashley Middleton 07761 816891

**Bowls:** Martin Amesbury 679271

**Bridge Club:** Nick Ryan 675923

**Chester Road Runners:** Gill Warburton [chesterroadrunners@gmail.com](mailto:chesterroadrunners@gmail.com)

**Cricket:** Craig Edwards 07478 713949

**Croquet:** John Dawson 675929

**Evergreen (Over 60's Club):** Sandra Magilton 677373

**Friends of Westminster Park:** David Guyton 675978

**Gardening Club:** Mary Pole 674439

**Junior Football:** Frank Marnell 07801 064211

**Lache and Westminster Park Local History Group:** Linda Shuttleworth 679791

**Model Railway Club, Chester:** Colin Dollimore 629167

**National Women's Register:** Betty McLoughlin 677680

**Nordic Walking Group:** Ted Rose 01928 722334

**Rotary Club, Chester Riverside:** Pam Drew 07786 225552

**Shotokan Karate Club:** Dave Craggs 07711 009041

**St Mary's Church Parish Office** 671202

**Revd Paul Dawson** 675199

**Tennis - Glan Aber Tennis Club:** Sue Britton 677936

**Westminster Park Community Assoc:**

671243

**Westminster Park Walking for Health Club:**

**WI, Handbridge:** Secretary Veronica Bull 675085

676865

#### SCOUTING:

**Group Scout Leader:** Sue Jones 675538

**Beavers (Wednesday):** Jane Shorthall 682136

**Cubs (Monday):** Michael Glass

**Cubs (Thursday):** Christine Owens 676691

**Scouts (Friday):** Terry Coe 676734

**Explorer Scouts (Tuesday):** Sharon Johnson

#### GUIDING:

**Rainbows (Monday):** Pat McGettigan 677134

**Brownies (Tuesday):** Jan Hooper 674701

**Guides:** Contact the District Commissioner: Sue Fryer 679945

Westminster Park  
**Dog Training**

Friendly. Qualified. Experienced.  
Classes now at Westminster Park Scout Hut

**Call 07532109973**

Find us on Facebook

# Our local businesses

## **al dente** **The Deli**

**Bread ~ Cakes ~ Pies ~ Olives**  
**Wine ~ Pickles ~ Jams ~ Soups**

**Lots of delicious homemade produce:**  
**ready meals, cakes & home cooked**  
**meats**

**Greeting cards ~ Hampers made to order**

**Coffee lounge now open for drinks,**  
**snacks & meals**  
**01244 675994**

## **Francis Thomas Fruit Merchants**

Five Ashes Road, Westminster Park  
Tel: 680448

**Specialists in locally grown produce**

**SUMMER BEDDING NOW IN!**

**Yeast and Wessex Mill Bread Flours**

**A range of quality, selected fruit juices,**  
**cordials & preserves**

**Free local delivery for all orders over £15**

**S J Bebbington Butchers of Chester**  
53 Five Ashes Road, Westminster Park. Tel: 682424

**FOR THE BARBEQUE**  
**Award winning steak burgers**  
**Freshly made kebabs & koftas**  
**Boerewors sausage**  
**21 day mature steaks**  
**Marinated chicken breast**  
**Award winning sausages**  
**FOR THE PICNIC TABLE:**  
**Cooked meats Hand made pies**  
**Delicious quiche Scotch eggs**  
**Locally sourced cheese**  
**Browse the range & order online at**  
**[SJBEBBINGTONBUTCHERS.CO.UK](http://SJBEBBINGTONBUTCHERS.CO.UK)**

## *Dave Williams* **PHOTOGRAPHY**

For all your photographic needs, from passports  
and family portraits to weddings and events

**Introductory offer 10x8 for £5**

70 Lower Bridge Street, Chester CH1 1RU  
01244 344164

**[www.davewilliamsphotography.co.uk](http://www.davewilliamsphotography.co.uk)**

## **CHRISTIAN FAMILY CHURCH** **Cheshire**

**Celebrating the life of Jesus Christ every Sunday**  
**morning at Westminster Park Community Centre**  
**10.00 a.m. to 11.30 a.m.**

**01244 570205**

**[www.cfccheshire.co.uk](http://www.cfccheshire.co.uk)**

email: **[cfccheshire@googlegmail.com](mailto:cfccheshire@googlegmail.com)**

## **DEE SPORTS DIVING SCHOOL**

67 Brook Street, Chester, CH1 3DZ

**01244 314204**

Scuba diving courses and International  
Diving Certificate

Water Sports Equipment

**Check out our prices on our website**

**[www.watersportschester.co.uk](http://www.watersportschester.co.uk)**

## **DJE ELECTRICIAN**

I offer a complete domestic electrical service.  
Part P registered. No job too small.

Why not try me, an experienced professional,  
for a reliable and friendly service?

Call for a no obligation quote and advice:

**Dom: 07905 468817**

**[djelly@tiscali.co.uk](mailto:djelly@tiscali.co.uk)**

## **CHRIS PAGE PLASTERING**

**EST. 1988**

For all plastering requirements including:

Float and skim

Plastering/re-skims

Coving/Cornice work

Dry-lining/Rendering

**Tel: 01244 659917 or 07754 884565**

## **Is walking a pain?**

Contact **INSTEP PODIATRY**

HPC Registered Podiatrist/Chiropodist

Nails/Corns/Callus/Cracked Heels

Gait Analysis and Orthotics/Sports Injuries

Nail Surgery

la Moorcroft Mews, High St, Saltney, Chester

**Tel: 01244 671226**

## **PLUMBSTRUCT SERVICES**

Chester based company providing a wide  
range of skills and trades:

Plumbing and heating – general building work  
Bathrooms and kitchens – joinery – floor and wall  
tiling – guttering and outside drainage – decking –  
fencing and landscaping – loft insulation –

all aspects of property maintenance

All work insured and guaranteed.

City & Guilds qualified

Totally trustworthy – references available.

Contact Russ for free quote –

any job, whether large or small.

**Mobile 07944 685260**

Email: **[plumbstruct-services@fsmail.net](mailto:plumbstruct-services@fsmail.net)**

## **SAUNDERS FOR SERVICE**

Save up to 50% off main dealer service/repairs  
without affecting your manufacturer warranty.

All makes car servicing, repair and MOT

Services available from £79.99 inc VAT

MOT £39.99

Free collection and delivery service

Free courtesy vehicles; free wash and vac

Unit 6 Ketlan Court, River Lane, Saltney,

CH4 8SB – **Tel: 01244 680777**

**[www.saundersforservice.co.uk](http://www.saundersforservice.co.uk)**

**[phil@saundersforservice.co.uk](mailto:phil@saundersforservice.co.uk)**

## **A C Ground TEC**

Established 2001

**All types of ground work**

Dig outs

Block paving

Tarmac

Patios

Paving

Decking

Fencing

Wall building

Ponds

Features

Planting

Turf laying

Client recommendations and photographs of

previous jobs are available to view.

Good quality sheds available at discount prices for  
supply and build.

**Considerate Construction**

**A C Ground TEC**

**Est 2001**

**A Lasting Effect**

**Tel: 01244 681496**

**Or Mob: 07904 445609**

## **WALKING AND WAGGING**

Local dog walker who is trustworthy, reliable, fully  
insured and CRB checked. I work on a basis that  
works around you and your day.

£8 full hour per dog, £5 half hour per dog.

**Introducing pet sitting**

**£20 per night for up to 2 pets**

**£5 each per extra pet**

**NEW CAT SERVICE** – remove the stress of going  
on holiday and putting them in a cattery.

£5 per day includes visits twice a day,

feeding and lots of fuss.

**Mobile: 07568 324136**

Email: **[nicki-louise@hotmail.co.uk](mailto:nicki-louise@hotmail.co.uk)**

## **KEN BENNETTS**

Joiner & Builder

General joinery, Kitchens, Bathrooms, Windows,  
Doors, Fascias and Gutters

38 Vincent Drive, Westminster Park

**Tel: 629213 / 07976 801977**

## **D JONES**

**Property Maintenance**

Flat roofs / Tiling / Pointing / Plastering /

Plumbing / Joinery / Brickwork / Painting /

Decorating / Bathrooms / Kitchens / Patios

**All work undertaken**

**No job too big or too small**

**Call Dave on**

**01244 679984 or 07707 059717**



DENTOLOGICUM

**Chester Business Park**  
**Dental Practice**

- General and cosmetic dentistry
- Clear removable and fixed braces
- Implants • Smile makeovers
- Practice Plan
- Interest free finance
- Free parking • Ground level

**Honeycomb West, Chester CH4 9QH**  
**01244 950 616 [info@dentologicum.co.uk](mailto:info@dentologicum.co.uk)**

**WP News is delivered to 1200 households in the Westminster Park area.**  
**To advertise, please call Jennifer Crew on 07752 854383**