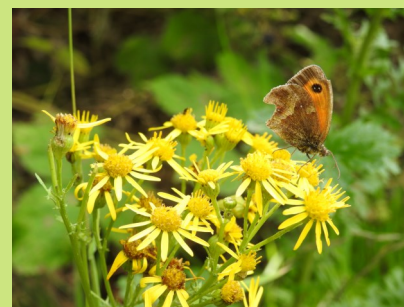


WP News

Westminster Park Residents' Association



Bringing our community alive

www.wp-ra.org.uk


@wesparkra

A summer of sun and fun

It was wonderful to see well over 1000 of you enjoying the opportunity to get together at the Westminster Park Community Centre to celebrate Her Majesty Queen Elizabeth's Platinum Jubilee in June. There's a spread of photographs at the heart of this issue, recording the Picnic and Fun Day. For the first time we organised live music which was well received and so we shall be aiming to keep that as a feature in future. Huge thanks to all of the volunteers, artists and stage management for helping to make the day such a success.

As we move towards autumn, we have plans for some further events to bring our community together: a **"Tidy Up Morning"** at the shops on **Sunday 18 September from 10am – 12 noon**, an **Autumn Quiz** on **Saturday 22 October** and our **Christmas Lights Switch-on** which we have pencilled in for **Thursday 1 December**. Please come along and join us for some or all of these – the more the merrier! Our Gardening Club has also organised a visit to **Bluebell Cottage** on **Wednesday 14 September at 2pm**. See page 4 for more details.

Nothing stands still at the WP shops and as some businesses leave, others open in their place. We are pleased to welcome the owners of Sandstone and Three Fellas Burger to our neighbourhood and look forward to getting to know them and sampling their products.

More than 40 people came to our public meeting to discuss the

latest detailed planning application by Redrow for the development of 483 dwellings at the southern end of the Kings Moat estate. Some points were also raised about the recent school proposals involving Belgrave Primary School. WPRA committee member Brian Westcott's article on page 2 provides more information.

In a roundup of other construction news, work continues further down Lache Lane to provide drainage and a footpath for the houses under construction at Decoy Farm. Thankfully, traffic is now controlled by lights rather than a one-way system. The Winkwell Drive/Lache Lane field development is well under way. Mud on the road has been reported, this is not allowed and the Council should be informed.

Finally, you may not be aware, but WPRA has invested in a new photocopier for residents to use. It is situated in the WP Pharmacy and costs 5p per black & white copy and 10p for colour. Pay at the counter, coins not required.

Should you have any suggestions for improvements to our neighbourhood or other ideas that you would like to share, please don't hesitate to let us know.



Jennifer Crew
Chair, WPRA

Westminster Park Residents' Association

AUTUMN QUIZ

Saturday 22 October, 7.30pm
Westminster Park Community Centre
Tickets £10 to include full buffet
Tickets available from Bebbington butchers
and Sandra Magilton 01244 677373

Community working together

Last September we organised a working party to tidy up the roads and footpaths surrounding the shops. The response was fantastic - over twenty people came, armed with brushes, hoes and spades, and we were able to remove most of the weeds in an hour or so. But the weeds keep growing and the Council has not got the resources to do much. So we are organising a repeat on **Sunday, 18 September at 10:00 am**.

PLEASE put the date in your diary and come along to help. In just an hour we can make a huge difference!

Councillors' news

Westminster Park

We would like to take this opportunity to say a massive thank you to all the amazing volunteers who work so hard every Wednesday in Westminster Park. We really do appreciate it and can report that we receive fantastic feedback about how lovely it looks.

Road Works

Councillors are aware of how much disruption many residents have been subjected to, caused by extensive road works in our ward. We have kept in close touch with the Highways Department to insist that these are minimised as far as possible and that repairs are carried out promptly and efficiently. Footways, grass verges and kerb stones are now being reinstated in Whaddon Drive and the road is due to be resurfaced this year. We will keep a close eye on any future restrictions and keep you updated on planned works.

Planning Application - Wrexham Road Site

There is a planning application variation (Section 73) under consideration, to change the mix of houses at the site near Greenacre Road; this is not unusual in such large scale schemes. The number of houses to be built is unchanged. There are a number of concerns that planning officers are currently looking at and we will be meeting them soon to raise issues that residents have brought to our attention. You can view the application on the

Council website and make comments via this link: <https://pa.cheshirewestandchester.gov.uk/online-applications/>. The reference number is: 22/01679/S73.

The Council has received expressions of interest from three local Primary Schools who would like to run the new school to be located on the Wrexham Road development and it is working on a submission for funding to be presented to the Government. Timings are hard to predict but it is hoped that the new school will be able to open in September 2024.

Waste Collection

The rollout of the new kerbside collections has started. Contractors are delivering new bins but not removing old boxes; the council encourages residents to keep these for their own use or they can be taken to the Household Waste Recycling Centre. We have received many complaints about this policy and we are looking at ways we can help. More information on waste collection and recycling can be found at a drop-in exhibition outside Chester Town Hall on Tuesday 20 September, 11am - 2pm.

Community Care

If you have any community projects or ideas about how we can facilitate improvements to the local area, please do not hesitate to contact your local councillors - Cllr Razia Daniels and Cllr Neil Sullivan or you can attend our regular street surgery on the first

Saturday of every month at Westminster Park Shops from 10.30 - 11.45.

Councillor **Razia Daniels**

01244 312392 or 07481 234411

razia.daniels@cheshirewestandchester.gov.uk

Councillor **Neil Sullivan**

07709 376876 or 01244 671099

neil.sullivan@cheshirewestandchester.gov.uk

Local news



Pauline Brown representing WPRA at a "walkabout" in Chester City Centre with Police Commissioner John Dwyer and Chief Inspector Mike Ankers (who is responsible for the Chester Local Policing Unit) together with Mike Hogg, Chair of Chester Residents' Association Group (CRAG). Pauline was able to raise the local issues of Westminster Park including some anti-social behaviour and an attempted burglary.

Wrexham Road Housing Development

The sub-committee of Westminster Park Residents' Association, set up to liaise with the builders, has been strengthened and is now being chaired by Stephen Mahay of Greenacre Road. The Council has received a revised outline planning application to increase the number of housing units on the main Wrexham Road site from 1269 to 1400, and a detailed plan proposing a number of changes to the southerly layout in the area of Greenacre Road.

Around 40 residents attended a public meeting in July and covered the following matters:

- Whilst there is no proposal to increase the number of housing units in the southern area, near Greenacre, Redrow is seeking to replace twenty-five 3-bedroom houses with larger, 5-bedroom properties. In response to complaints, some of these dwellings have been turned through ninety degrees so they do not overlook existing houses. Similarly, a block of affordable houses, positioned close to the border with Greenacre Road, has been moved deeper into the estate.
- The new layout showed a road coming up to the hedge bordering Greenacre Road

raising fears that it might be used to gain vehicular access from the estate into Lache Lane. This intention was denied at the meeting.

- An existing public footpath leads from the top of Greenacre Road into the estate close to the site of the new school. Concerns were raised about potential traffic congestion as parents may park in the area and walk their children through to the school. Some residents argued that the footpath should be closed.
- The risk of increased flooding was also discussed. The builders advised that a detailed surface water plan has been followed which purports to present a very low flooding risk. A large attenuation tank has been constructed under the playing field which will temporarily hold surface water plus another smaller one. A third is planned.
- Consideration is also being given to the new Kings Moat School on the site. WPRA has submitted an objection to the proposal that the new school be for over 8s and that Belgrave become an infant school once again. The objection focusses on concerns about increased traffic in the area,

particularly for parents with a child in each school. Ideally, the new school should be mainly for the children living on the new estate.

These concerns were put to the builders at a subsequent meeting with the sub-committee. The builders reported that approximately 200 houses are occupied and said that that, when 250 houses are occupied, the school building site should be ready, with utilities and services, to hand over to the Council.

Join the WPRA

A very warm welcome to all residents who have moved to the Westminster Park area in the last few months – we hope that you will join our Residents' Association, if you have not already done so. The committee and its members are keen to promote a sense of community and to care for our local area and residents through newsletters such as this one and regular activities and events throughout the year. I am happy to supply more details – just call me and I will send you an application form.

Colin Dollimore
Vice Chairman and Membership Officer
01244 629167

'Wisdom begins in wonder' (Socrates)



The busy girls from **18th Chester Brownies** have experienced space, water and history.

Thanks to support from the Co-op's local community fund, Brownies visited Jodrell Bank where they explored the hands-on exhibits, watched the amazing space show and gained their Space badges.

Under the watchful supervision of Simon, they took to the river on bell boats gaining in confidence and

engaging in huge water fights!



In July, the pack joined other local Brownies to march around Chester, marshalled by a Roman soldier, to hear about life in Roman Deva.



Amelia, Elspeth, Heidi, Sasha and Trudy completed their Gold Awards which is a huge achievement. Their final challenge was to organise and run a whole meeting on the subject of 'Superheroes' and the girls were so successful that the Leaders almost felt redundant on the evening!

Knock out activities with Evergreen

Members of Evergreen recently enjoyed a lovely midsummer supper evening at the Mill Hotel and a lunch at the Bickerton Poacher plus a good old-fashioned game of skittles.

Our autumn programme includes a guided walk around Chester and a talk on a convict's journey to Australia (both events in September), an insight into the lives of the servants of Erddig (October) and a session on the role of radiology in archaeology (November). The Supper Club will run from September to November.

If you are undecided if Evergreen is for you, why not come along for a taster session as a visitor for £2? We meet on the third Thursday of the month in the Westminster Park Community Centre, 2.00- 3.30 pm. We are always on the lookout for new committee members. Our committee has been working together for the past 10 years and at some point in the future, we would look to hand over the role to a younger committee who will carry on the good work and keep Evergreen active for the future community of Westminster Park.

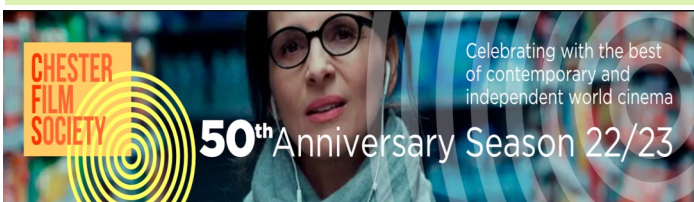
Sandra Magilton, 01244 677373 / sandymagilton@googlemail.com
Penny White, pennywhite@sky.com



Golden Jubilee for Chester Film Society

Chester Film Society are very excited to announce their first full season for nearly three years. This will also be their **50th season**, a huge milestone and a testament to the power of cinema to transcend world events!

They will be showing a programme of 12 films, in the Garret Theatre, Storyhouse, all on Thursday nights at 7:30pm. Find more details at www.chesterfilmsociety.co.uk.



Glan Aber Tennis Club – Junior sessions

Summer camps have been busy - it's great to see so many children having fun and playing tennis. Thanks to Aidan and team at All Court Tennis Academy (ACTA) for their hard work and enthusiasm.



Group coaching and Pay & Play coaching sessions for adults and juniors can be viewed and booked via the ACTA app. New members are always welcome. For further details, go to www.glanaber.com.

Croquet calling

It's been a good season for Chester Croquet Club with teams in North West leagues and some national competitions. We set up a mini croquet lawn at the Jubilee Picnic and hosted sessions for groups including Chester Ramblers, Chester Deva Rotary, St Mary's Guides and Mensa whilst over 20 new members signed up at our busy taster day in spring.

Croquet really is a sport for all – find out more from our website chestercroquet.club.



Passion for Learning

VOLUNTEER TODAY
 0151 356 8717

FANTASTIC, FUN & REWARDING

WOULD YOU LIKE TO:

- IGNITE A CHILD'S CURIOSITY
- MAKE LEARNING FUN
- MAKE A DIFFERENCE

Do you have 1-3 hours free a week?

Search for us on:

JOIN OUR VOLUNTEER TEAM TODAY

Full training and ongoing support is given. Lots of fun and social events in the year are organised for you to share experiences and make new friends.

✉ louise@passion-for-learning.com

☎ 0151 356 8717 or 07592 503042

🌐 www.passion-for-learning.com

Friends of Westminster Park waving the Green Flag!

We all know Westminster Park is brilliant and now it's official; after a visit from the judges, our park has retained Green Flag status. Well done to our park rangers Andy James & Andreu Worrell, their team, all the volunteers, all the sports groups and visitors, and people who regularly pick up litter. Plans are afoot to renew the signs at the entrances and to re-hoist the Green Flag.

Volunteers have been trimming and thinning shrubs and trees at the Lache Lane and Cliveden Road entrances, along the path behind the bowls and croquet lawns and in the arboretum beside the children's playground. We also started to work on the flowerbeds again, deadheading, weeding etc. As gardeners will know, this is a never ending task, which we love.

If you have taken a walk past the exercise area, towards the BMX track, you'll have seen some truly spectacular wildflower beds. Thank you to Jason Lambert of Cheshire West and Chester for these, they are very cheering. Turn left and you'll see a green gate. You ARE allowed to walk through here; the small side gate is always unlocked. Here, in the woodland area, there are lots of interesting wild flowers such as black knapweed, creeping thistle, white and yellow sweet-clover, lady's bedstraw, cut leaved crane's-bill, wild carrot and mallow. The apples will soon be ready for picking, just hold one and twist gently; if it's ready it will come away easily. And, of course, lots of berries are ready on the brambles. Just leave some for the birds!

Volunteers are always welcome – every Wednesday, 10am til 12. Meet us at our tool store round the back of the cafe or find us in the park. Look for the yellow jackets. Thanks go to CWaC for the set of tools donated to Friends of Westminster Park gardeners!



Gardening Club news

Jubilee Picnic Plant Stall

Friends and members provided so many wonderful plants donations for our stall at the Jubilee Picnic that we managed to raise an amazing £295 - many thanks to all who supported this by giving or purchasing! The Gardening Club used some of the cash to contribute towards the wild flower seeds that Friends of Westminster Park have sown in the Park.



Bluebell Cottage Gardens, Lodge Lane, Dutton, Nr Warrington, WA4 4HP. Free access for RHS members, £5 for non-members. Wednesday 14 September, 2pm.

Everyone is welcome to join us on this outing - just meet us there. The cottage is surrounded by gardens and nursery where you can walk down winding paths through an orchard, past wide borders planted with

perennials, see the bright, drought-resistant plants in the gravel gardens, check out the vegetable plot. There is also a café and a well stocked nursery section, for plant purchases.

Growing Plants for Flower Arrangers Wednesday 19 October 8pm

Sharon Nolan has won many awards for her innovative and eye-catching flower arrangements. The emphasis of her talk will be on what can be grown for flower arranging but she will certainly also give us some ideas on how best to arrange cut flowers, foliage and berries.

Mary Pole, pole.mary@gmail.com

WPRA membership details and email preferences

You can view your membership details and update your email preferences via our members' portal to give you control over which emails (if any) you receive from us. If you are not already on the system, you can also register on the portal site. There is a link on our main website - www.wp-ra.org.uk

Access to Community Noticeboards

There are a number of noticeboards in the area on which you can display notifications of events, etc. Here are the details of the persons you need to contact:

Community Notice board, Castlecroft Road (no trade notices)
Martin Amesbury 01244 679271
Brian Westcott 01244 675431

Notice boards at Lache Lane and Hough Green entrances to Westminster Park
Sue Britton 01244 677936

WPRA Notice board, Bebbington & Williams Fishmongers

Did you know you can advertise your unwanted items or business services on the WPRA Notice Board?

Charges are free for household/personal items, £5.00 for trade/services, for a period of 3 months.

To advertise, contact Sandra Magilton 01244 677373.



Longhurst's Laundry & Cleaning

**NO JUDGMENT
CLEANING**

Fully Insured & Infection Control Trained
Domestic / commercial cleaning
Loyalty card rewards for regulars
www.facebook.com/longhurstslaundrycleaning
07454 005305
www.longhursts-cleaning.co.uk
Call today for a free, no obligation quote.



Deva Podiatry
Foot Health Clinic
01244 680365

7 Manor Road, Westminster Park, CH4 7QW

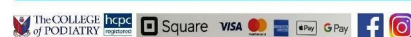
Do you suffer from painful feet?

Let our fully qualified Podiatrist provide professional and friendly treatment and advice to get you back on your feet.

Daytime, evening and weekend appointments available.
Visit us at devapodiatry.com for more information on our full range of podiatry services



Sarah Webber Bsc (Hons) MSCh HCPC Reg: CH32605



**CHESTER
REFLEXOLOGY**

- Reduce symptoms of stress
- Relieve tension and pain
- Support during pregnancy and infertility

Call Sarah on 07879883652
www.Chester-Reflexology.co.uk

Westminster Park
**Jubilee Picnic
 & Fun Day**



...THE MOMENT OF CROWNING GLORY...



...ARROWS AND BLOOMS...







It was so typically British: from the mix of weather - sun, rain, wind - with some shopping opportunities; beer and butties; fizz and face painting.

It was a chance to chat, catch up with old friends, meet some new ones, wave a flag, enjoy live music, even to do a twirl.

IT WAS HUGE FUN!





***Thank you everyone for coming along, helping,
cheering, waving and for joining in!***

A century of singing - Chester Operatic Society



Following the successful production of 'Me and My Girl' at Storyhouse, Chester Operatic Society's celebrations continue this autumn.

'Rhythm of Life' will be a joyous musical mix reflecting the past 100 years, with lots of well known numbers including, of course, the eponymous title song.

The concert is at St Mary's Creative Space on Friday 30 September and Saturday 1 October.

Tickets £15 available from Brian Westcott (01244 675431) or Ticketsource.

Come Walk With Us - Crampons Not Required!

Most Tuesday mornings sees a group of 'walking for health' folk meeting at the café in Westminster Park to embark upon their weekly walkabout. With the exception of a gap enforced by the covid lockdown, we haven't missed a session in the 14+ years since our inaugural walk in January 2008. Even in the depths of winter, with six inches of snow on the ground (remember that?) and somewhat dangerous footways, we achieved at least a single circuit of the park – which is about one mile.

In the years we have been going, we must have walked on every footway and footpath within a 2-mile radius of Westminster Park. Favourites include both sides of the river, often using the footpath alongside the Dee

railway bridge, the Groves (with an ice-cream on hot days), Duke's Drive, Curzon Park and Handbridge.

Generally we have 20-25 people walking, but on a few pleasant summer days in the past we have had almost 40 people join us.

We usually walk about three to four miles at a gentle pace, guided by a trained walk leader; the idea is not to rush to the finish line but to ensure that everyone can have a bit of exercise and a natter. In the 'old' days some of us used to return to the café for a bacon bap or a toastie (undoing all the good we had just achieved?), but nowadays a cup of coffee is the norm.

You don't have to be a resident of Westminster Park to take part; we have walkers from many local areas join us and there is a large car park for those who

are coming from afar.

This is a free activity – just turn up at the Westminster Park café at 10.15am on a Tuesday morning, fill in a simple health questionnaire to keep the insurers happy and you will be made very welcome.

Peter Cocker



The inaugural walk, January 2008

Handbridge Community Association presents

A CONCERT FOR UKRAINE

Friday 7th October 7.15 pm
St Mary's Church, Handbridge

Rhos Orpheus Male Choir and guests

Tickets £10 each
Ukrainian guests and refugees from any location £1 (with suitable id)

Scan to purchase tickets
or call Jonathan on
07903 935115 or Richard
on 07528 259087.

or visit www.trybooking.co.uk/30556

UKRAINE HUMANITARIAN APPEAL



A right "Royal" visitation

Handbridge WI got well and truly into the Platinum Jubilee spirit and entertained a very special guest when it seemed HM Queen Elizabeth II, accompanied by two guardsmen and a corgi, attended our garden party! Her Majesty was also in evidence when members ran a very successful tea and cake stall at the WPRJ Jubilee Family Fun Day in Westminster Park.

Continuing the royal theme, the craft group knitted Jubilee corgis for post box toppers around Handbridge. They have also made pictures using needle felting and dyed silk scarves. In September, we will have a talk about the work of our local hospice whilst the October meeting will bring us 'The Story of the People of the Lache Park Estate'. The WI AGM will be held in November and for our December meeting we are going Christmassy and making a table decoration.

Please come to a meeting as a visitor and try us out; a warm welcome for all. We meet on the first Tuesday of the month at 7.30 in St Mary's Centre Handbridge. Contact Maureen 01244 671304 for more details.



What's On !

Together at the Grosvenor Museum Society

The Grosvenor Museum Society welcomed back members and guests to lectures and events and has a series of talks planned for the autumn:

- Tuesday 13 September 7pm - **The Docker Umbrella**, by Ken Pye;
- Tuesday 11 October 7pm - **Shackleton**, by Brian Anderson;
- Tuesday 15 November 2pm - **History of the Gladstones**, by Celia Drew.

Membership of GMS has been reintroduced, with funds going towards the acquisition of items for the museum. The annual cost is £10, giving a reduced price entry of £3 for lectures. Guests will be charged £5. We offer

tea and coffee after the talks, to give us a chance to catch up with friends old and new. If you would like more details, please don't hesitate to contact the secretary, Andrea Hopkinson – andreaHop@talktalk.net or 01244 675555.

Recently, the Society has funded the purchase of several historic items discovered by local metal detectorists during the lockdown period. These range from Roman rings to Georgian cufflinks and all of them tell us something about the life of ordinary folk in Chester's history. Once the artefacts have been registered with the British Museum's Portable Antiquities scheme, they will be

displayed in the foyer of the Museum on Grosvenor Street for a while and then will be placed into the relevant collections.



Found near Tattenhall, a 16th or 17th century gold posy ring with the inscription 'In Trust be Just'. The ring would have been given by a lover to his or her amour as a token of lasting love and affection.

New season – New you? Find activities at Westminster Park Community Centre

Many of us come back from holidays or end the summer with good resolutions to try something new, get fit, meet new people, learn a new skill and it's all possible right at the heart of the community at WPCC.

Every day there is something different, including Yoga, Zumba, Karate, Stretching and Mobility and Pilates. You can access Christian Family Church, Weight Watchers and the Evergreen group, play bridge or simply

drop in for a tea or coffee and scone and chat. Belgrave pre-school is open during term time and, of course, the social club is open every evening from 7.30pm where there are football and pool tables plus a darts board.

Additionally, the main hall is available for private hire and charity nights.

Contact Phil: 01244 671243 (from 7-30pm) or email wpca2008@yahoo.co.uk. Full details of activities can be found on WPRA website – click on 'Community Centre' above the photo of the shops.

Local History Group News

It has been great to get back to some sense of normality this year, with many of the Lache and Westminster Local History Group activities resuming, even if cautiously. There were two events last autumn; a talk from a local architect about the building of Paddy's Wigwam – the affectionate nickname of Liverpool Metropolitan Cathedral, and a splendid 'Night at Chester's Cinemas'.

We also had talks from David Ryan about his lifelong career in museums and archives, from Chris Fozzard on the story of Newton Hall and from Peter Winn of the Sandstone Ridge Trust on what's under the ridge (sand and copper!)

Meetings are held at The Venue, in Lache Community Centre and everyone is welcome to attend. The next talk will be on Tuesday 13 September (see right), followed by 'Crichton's Shipyard at Saltney', by Geoff Pickard on Thursday 10 November.

Email me if you would like to hear about future meetings and occasional relevant topics.

Linda Shuttleworth,
Secretary, Lache and Westminster LHG
shuttleworths@talktalk.net

ELENA'S CAKE COMPANY

Stunningly scrumptious wedding and celebration cakes!

Based locally on Lache Lane.
Supplying North West England and North Wales areas.

Web: WeddingCakeCheshire.com
Email: ElenasCakeCo@hotmail.com
Social media:
[@ElenasCakeCompany](https://www.facebook.com/ElenasCakeCompany)



By Veronica Bull

**7.30pm Tuesday 13th September 2022
at Lache Community Centre
Hawthorn Road Chester CH4 8HX**

£1 per person on the door, but please book your places in advance if at all possible, as we continue to keep numbers to a comfortable limit. Refreshments will be available.

To book: email shuttleworths@talktalk.net or phone Linda on 01244 679791 or text 07726 425847.

Abbey WINDOW CLEANING

01244 638 108
07967 835 064
EST. 1981
FIVE STAR REVIEWS ON GOOGLE
FULLY INSURED, LOCAL,
RELIABLE + TRUSTWORTHY

COMMERCIAL
RESIDENTIAL
INDUSTRIAL

**WINDOW CLEANING
GUTTER CLEARANCE
ROOF CLEANING AND MOSS REMOVAL
PVC RESTORATION
RENDER, SOLAR PANEL CLEANING**

CALL US FOR YOUR FREE NO-OBLIGATION QUOTE OR
E-MAIL INFO@ABBKEYWINDOWCLEANING.COM
WWW.ABBKEYWINDOWCLEANING.COM

BLUE FINCH

FURNITURE

**Furniture
& Handyman Services**

Bespoke Furniture
Fitted Furniture
Doors/Skirting etc
Flatpack Assembly
Interior/Exterior Painting
Minor Filling/Repairs
Odd Jobs

For a free no obligation quote call
James on 07860 384145

Fond farewell

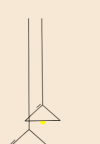
Dear Friends, Customers and Residents,

I wanted to say a little 'thank you and goodbye', after my four happy years at The Interiors Shop; I will miss your support, conversations and community spirit. I do hope you will enjoy the Sandstone Bar and have a drink there to remember me! I'm happy to say that I have kept the interiors business going, so if you're looking for design inspiration, Little Greene paint, wallpapers, fabrics, curtains, blinds and upholstery, please do get in touch.

Very best wishes,

Ros
As You Like It Interior Design

As You Like It Interior Design



As You Like It

Looking for interior design advice?

We have a team of experts ready to help, offering FREE advice & support.

hello@asyoulikeitinteriordesign.co.uk
www.asyoulikeitinteriordesign.co.uk
01244 678 444

The information section

WPRA Committee

Chair: Jennifer Crew chair@wp-ra.org.uk
Vice Chair: Colin Dollimore 629167
Secretary: Penny White sec@wp-ra.org.uk
Treasurer: Sue Britton 677936
Editor: Andrea Hopkinson

newsletter@wp-ra.org.uk

Website Co-ordinator: Dave Craggs 682407
webmaster@wp-ra.org.uk

Other Committee members

Olwen Bellis 678719
Pauline Brown 679823
Tracey Casey
Susan Eva 676697
Karen Liddle
Annemarie Macfadyen
Sandra Magilton 677373
Brian Westcott 675431
Anne Ord Sykes 07973151410

anneordsykes@gmail.com

Clubs & organisations based in Westminster Park

Please let the Editor know if details are incorrect or you have an organisation to list.

Belgrave Badminton Club: Khal 07786 080089

Belgrave Pre-School: Ashley Middleton
07761 816891

Bowls: Martin Amesbury 679271

Bridge Club: Nick Ryan 675923

Chester Road Runners: Gill Warburton

chesterroadrunners@gmail.com

Cricket: Tirumala Dayama

dayamatirumala@googlemail.com

Croquet: John Dawson 675929

Evergreen (Over 55's Club): Sandra Magilton
677373

Friends of Westminster Park: Steve Telford
07976 712339

Gardening Club: Mary Pole 674439

Junior Football: Peter Burke 07798 576790

Lache and Westminster Park Local History Group: Linda Shuttleworth 679791

Model Railway Club: Colin Dollimore 629167

National Women's Register: Betty McLoughlin
677680

Nordic Walking Group: Ted Rose
01928 722334

Rotary Club, Chester Riverside: Colin Dollimore 629167

Shotokan Karate Club: Dave Craggs
07711 009041

St Mary's Church Parish Office: 671202

Tennis - Glan Aber Tennis Club: Sue Britton
677936

Westminster Park Community Assoc: 671243

Westminster Park Walking for Health Club: Fred Whiteley 675085

WI, Handbridge: Maureen 671304

SCOUTING:

Group Scout Leader: Susan Jones
bsusanjones@aol.com

Beavers (Wed 6.15 to 7.15pm): Jane Shorthall
07890 159545

Cubs (Mon 6.30 to 8pm): Simon Duggan
18rowallancubs@gmail.com

Cubs (Thur 6.30 to 8pm): Chris Owens
01244 676691

Scouts (Wed 7.30 to 9pm): Michael Glass
eighteenthchesterscouts@outlook.com

Explorer Scouts (Tuesday): Sharon Johnson

GUIDING:

Rainbows (Wednesday): Krystina Littlehales
07860 845402

Brownies (Tuesday): Janne Hooper 674701

Guides: Krystina Littlehales 07860 845402

Beer and Burgers

September brings two new businesses to join the established shops at Westminster Park. Work has been going on at the premises and people are keen to see (and probably to try out!) what Sandstone and Three Fellas Burgers have to offer.

There will be more details in the next newsletter but for now let's look forward to drinking at Sandstone's bar or taking home a wide range of cask and keg beers and wines from single estate and small batch production vineyards, whilst Three Fellas Burgers will serve up Smash Burgers, Chicken Burgers and Veg Burgers (the clue is in the name!)



Tuition

SATS/ Entrance exams 2022/23?

NOW is the time to start preparing!

English/ Maths/ Non-verbal/ Verbal Reasoning

Tuition for KS2 tests, or general help with literacy or numeracy (5-11years) by experienced tutor.

Reasonable rates: ring 01244 675431.

We wish both enterprises a great deal of luck and lots of local custom.

WP News is published by the Westminster Park Residents' Association with the understanding that from the information presented therein, there can be no responsibility as to the accuracy or legality of the content on the part of the WPRA. Views expressed are not necessarily those of the Editor or Committee of the WPRA.

FRESH BREAKFAST BAPS

Waiting for you at
Chatwins, your local
craft baker

49 FIVE ASHES ROAD, WESTMINSTER
PARK, CHESTER CH4 7QS



Our local businesses



UPVC Window and Door Repairs

Paul Proudfoot

Tel: 01244 674179 Mobile: 07526 238646
Email: paulproudfoot79@gmail.com

**Get in Touch • Get a Quote • Get it Done
NO CALL OUT FEE**

**Bebbington & Williams Fishmonger &
Fresh Fruit & Veg**

55 Five Ashes Road, Westminster Park
01244 678 900
bebbingtonandwilliams@gmail.com

*Your local supplier of Fresh Fish, Seafood,
Fruit & Vegetables - available daily*

Mon-Fri 8:30am to 5:30pm
Saturday 8:30 to 4pm

Follow us on Facebook:
Bebbington & Williams Fishmongers



**SJ Bebbington
BUTCHERS OF CHESTER**

53 Five Ashes Road, Westminster Park
01244 682 424
sjbebbingtonbutchers@gmail.com

Your Local Traditional Butchers & Delicatessen
We offer a wide range of products, not just meat!
Side Dishes, Jam, Chutney & Sauces

& Gluten Free Options

Mon-Fri 8am to 5:30pm, Saturday 8am to 4pm.

Check out our website:
sjbebbingtonbutchers.co.uk
Follow us on Facebook & Instagram.



Dave Williams
PHOTOGRAPHY

Passports, Family and Children's portraits,
newborn, cake smashes and events.
70 Lower Bridge Street, Chester CH1 1RU
davewilliamsphotography.co.uk

01244 344164

**CHRIS PAGE PLASTERING
EST. 1988**

For all plastering requirements including:
Float and skim
Plastering/re-skims
Coving/Cornice work
Dry-lining/Rendering
Tel: 07754 884565

CASEY CLEANING

Local cleaning company based in
Westminster Park.
Regular or one off cleans.
High standard of cleaning.
Available for holiday & BnB lets.
Call us on 07957 438533 or 07748 335602.

DJE ELECTRICIAN

I offer a complete domestic electrical service.
Part P registered. No job too small.
Why not try me, an experienced professional,
for a reliable and friendly service?
Call for a no obligation quote and advice:
Dom: 07905 468817
djelly@tiscali.co.uk

**CHESTER FAMILY CHURCH
Cheshire**

**Celebrating the life of Jesus Christ every
Sunday morning at Westminster Park
Community Centre, 10.00 a.m. to 11.30 a.m.**
01244 795710. Mob: 07757 640203
www.cfccheshire.co.uk
email: cfccheshire@googlegmail.com

Is walking a pain?

Contact **INSTEP PODIATRY**
HPC Registered Podiatrist/Chiroprapist
Nails/Corns/Callus/Cracked Heels
Gait Analysis and Orthotics/Sports Injuries
Nail Surgery
1a Moorcroft Mews, High St, Saltney, Chester
Tel: 01244 671226

PLUMBSTRUCT SERVICES

Chester based company providing a wide
range of skills and trades:
Plumbing and heating – general building work
Bathrooms and kitchens – joinery – floor and
wall tiling – guttering and outside drainage –
decking – fencing and landscaping –
loft insulation
all aspects of property maintenance
All work insured and guaranteed.
City & Guilds qualified
Totally trustworthy – references available.
Contact Russ for free quote –
any job, whether large or small.
Mobile 07944 685260
Email: russwhite99@hotmail.co.uk

**A. C. GROUNDTEC
Est. 2001
All types of ground work**

**Dig outs Fencing Block paving
Tarmac Ponds Wall building
Patios Features Paving
Planting Decking Turf laying**

**Client recommendations and
photographs of previous jobs
available to view.**
**Good quality sheds available at
discount prices for supply and build.**
Tel: 01244 204081 Mob: 07904 445609
Email: acgroundtec@hotmail.co.uk

**SAUNDERS
FOR SERVICE**

Save up to 50% off main dealer service/repairs
without affecting your manufacturer's warranty.
All makes car servicing, repair and MOT.
Services available from £110 inc. VAT,
MOT £45.
Free collection and delivery service
Free courtesy vehicles; free wash and vac
Units 5&6, Ketlan Court, River Lane,
Saltney, CH4 8SB. Tel: 01244 680777
www.saundersforservice.co.uk
phil@saundersforservice.co.uk



**JOHN KNOWLES
FUNERAL SERVICES**

Personal, Professional and Compassionate Funeral Directors
in Rossett, Broughton, Saltney and Queensferry

**Our service is 100% professional and
100% personal.**

We will guide you through all legalities and
paperwork, helping you with every decision
along the way, from the arrangement itself to
the organising of any extras
you may wish to add.

Chester Road, Broughton, CH4 0DL
01244 530220
info@johnknowlesfunerals.co.uk
www.johnknowlesfunerals.co.uk



DENTOLOGICUM

**Chester Business Park
Dental Practice**

- General and cosmetic dentistry
- Clear removable and fixed braces
- Implants • Smile makeovers
- Practice Plan
- Interest free finance
- Free parking • Ground level

Honeycomb West, Chester CH4 9QH
01244 950 616 info@dentologicum.co.uk

**PYRAMID DECORATING
& TILING SERVICES
BARRY LEESON
EST. 2000**



- ◆ All aspects of decorating & ceramic tiling
- ◆ Reliable & friendly service
- ◆ Competitive rates
- ◆ References available
- ◆ Please call for a no-obligation quote
- ◆ Tel: 07985 113835 or
email f333ran@sky.com

WP News is delivered to over 1400 households in the Westminster Park area.
To advertise, please call Jennifer Crew on 07515 612082 or email newsletter@wp-ra.org.uk